

GKSI in contribution for healthy society supported by Fresh Milk

Bogor, 29 November 2016

Low cost family labour

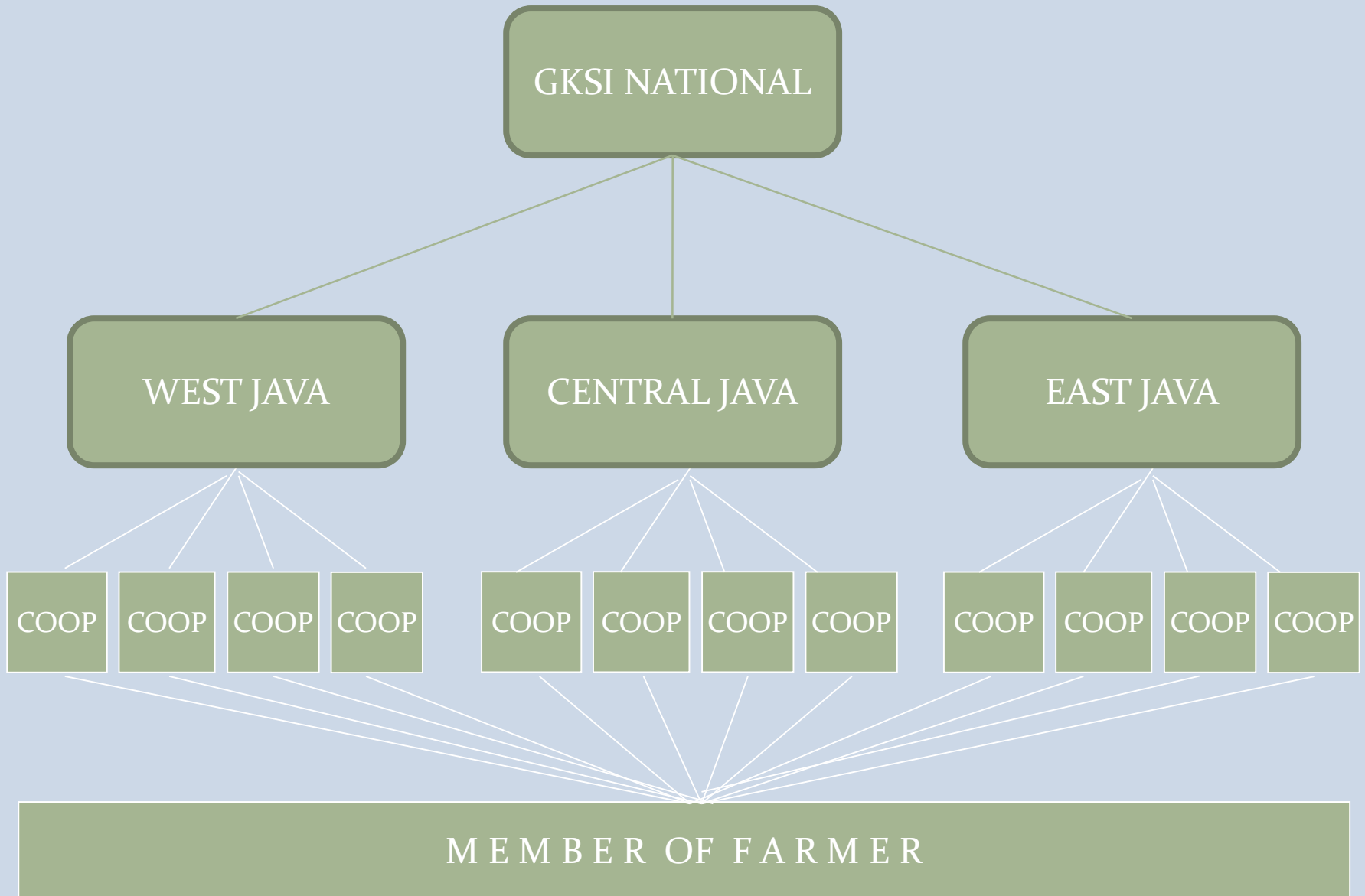




National Consumption

- National consumption :
 - 3.8 million ton/year from local contribution about ± 21 % and import about ± 80 %
- GKSI Contribution : 1.300 ton/day (475.000 ton/year)

STRUCTURE OF GKSI



PRODUCTION DAN POPULATION GKSI NASIONAL

GKSI	TAHUN	JUMLAH KOPERASI	POPULASI	ANGGOTA	PRODUKSI (KG/HARI)
JABAR	2013	22	81,980	22,836	449,500
	2014	22	69,376	20,115	376,409
	2015	22	56.203	16.614	323.907
	2016	22	56.742	16.135	377.727
JATENG	2014	23			205.100
	2015	24	56.433	22.573	132.494
	2016	24	53.054	20.337	124.562
JATIM	2013	51	221,944	47,890	843.000
	2014	52	138,361	42,759	802,925
	2015	52	182.000	60.000	800.402

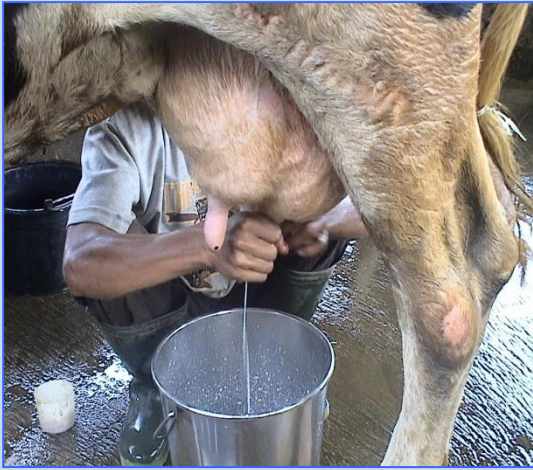


Produced by smallholders with 2-5 cows

Relatively modest economies of scale in milk production



Milk Cold Chain



MILK INDUSTRY

Cooling unit



Inspecting milk quality



using best practice production methods to enhanced productivity and cooperative levels

Transfer Tank



Food and Feed Supply





INDIGOFERA



Loan with zero interest





Transfer of knowledge and innovations by extension workers



Monthly evaluation of milk quality



Veterinary consult Artificial insemination



Medical services for farmer





BREEDING Rearing & Progeny Test

PROCESSING

PT. INDUSTRI ALAM MURNI – WEST JAVA



PT. SKM – BOYOLALI, CENTRAL JAVA



PT. SEKAR TANJUNG – EAST JAVA





OUR PRODUCT



TERIMA KASIH